

Trademarks

Autel®, MaxiSys®, MaxiDAS®, MaxiScan®, MaxiCheck®, MaxiRecorder®, and MaxiCheck® are trademarks of Autel Intelligent Technology Corp., Ltd., registered in China, the United States and other countries. All other marks are trademarks or registered trademarks of their respective holders.

Copyright Information

No part of this manual may be reproduced, stored in a retrieval system or transmitted, in any form or by any means, electronic, mechanical, photocopying, recording, or otherwise without the prior written permission of Autel.

Disclaimer of Warranties and Limitation of Liabilities

All information, specifications and illustrations in this manual are based on the latest information available at the time of printing.

Autel reserves the right to make changes at any time without notice. While information of this manual has been carefully checked for accuracy, no guarantee is given for the completeness and correctness of the contents, including but not limited to the product specifications, functions, and illustrations.

Autel will not be liable for any direct, special, incidental, indirect damages or any economic consequential damages (including the loss of profits).

IMPORTANT

Before operating or maintaining this unit, please read this manual carefully, paying extra attention to the safety warnings and precautions.

For Services and Support



pro.autel.com

www.autel.com



1-855-288-3587/1-855-AUTELUS (North America)

0086-755-86147779 (China)



support@autel.com

For technical assistance in all other markets, please contact your local selling agent.

Safety Information

For your own safety and the safety of others, and to prevent damage to the device and vehicles upon which it is used, it is important that the safety instructions presented throughout this manual be read and understood by all persons operating or coming into contact with the device.

There are various procedures, techniques, tools, and parts for servicing vehicles, as well as in the skill of the person doing the work. Because of the vast number of test applications and variations in the products that can be tested with this equipment, we cannot possibly anticipate or provide advice or safety messages to cover every circumstance. It is the automotive technician's responsibility to be knowledgeable of the system being tested. It is crucial to use proper service methods and test procedures. It is essential to perform tests in an appropriate and acceptable manner that does not endanger your safety, the safety of others in the work area, the device being used, or the vehicle being tested.

Before using the device, always refer to and follow the safety messages and applicable test procedures provided by the manufacturer of the vehicle or equipment being tested. Use the device only as described in this manual. Read, understand, and follow all safety messages and instructions in this manual.

Safety Messages

Safety messages are provided to help prevent personal injury and equipment damage. All safety messages are introduced by a signal word indicating the hazard level.

DANGER

Indicates an imminently hazardous situation which, if not avoided, will result in death or serious injury to the operator or to bystanders.

WARNING

Indicates a potentially hazardous situation which, if not avoided, could result in death or serious injury to the operator or to bystanders.

Safety Instructions

The safety messages herein cover situations Autel is aware of. Autel cannot know, evaluate or advise you as to all of the possible hazards. You must be certain that any condition or service procedure encountered does not jeopardize your personal safety.

DANGER

When an engine is operating, keep the service area **WELL VENTILATED** or attach a building exhaust removal system to the engine exhaust system. Engines produce carbon monoxide, an odorless, poisonous gas that causes slower reaction time and can lead to serious personal injury or loss of life.

SAFETY WARNINGS

- Always perform automotive testing in a safe environment.
- Wear safety eye protection that meets ANSI standards.
- Keep clothing, hair, hands, tools, test equipment, etc. away from all moving or hot engine parts.
- Operate the vehicle in a well-ventilated work area, for exhaust gases are poisonous.
- Put the transmission in **PARK** (for automatic transmission) or **NEUTRAL** (for manual transmission) and make sure the parking brake is engaged.
- Put blocks in front of the drive wheels and never leave the vehicle unattended while testing.
- Be extra cautious when working around the ignition coil, distributor cap, ignition wires and spark plugs. These components create hazardous voltages when the engine is running.
- Keep a fire extinguisher suitable for gasoline, chemical, and electrical fires nearby.
- Do not connect or disconnect any test equipment while the ignition is on or the engine is running.
- Keep the test equipment dry, clean, free from oil, water or grease. Use a mild detergent on a clean cloth to clean the outside of the equipment as necessary.
- Do not drive the vehicle and operate the test equipment at the same time. Any distraction may cause an accident.
- Refer to the service manual for the vehicle being serviced and adhere to all diagnostic procedures and precautions. Failure to do so may result in

personal injury or damage to the test equipment.

- To avoid damaging the test equipment or generating false data, make sure the vehicle battery is fully charged and the connection to the vehicle DLC is clean and secure.
- Do not place the test equipment on the distributor of the vehicle. Strong electro-magnetic interference can damage the equipment.

CONTENTS

1 USING THIS MANUAL	1
CONVENTIONS	1
2 USING THE SCAN TOOL.....	3
TOOL DESCRIPTION.....	3
SPECIFICATIONS	4
ACCESSORIES INCLUDED	4
KEYPAD	5
POWER	5
VEHICLE COVERAGE.....	5
PRODUCT TROUBLESHOOTING.....	6
3 OBD II DIAGNOSTICS	8
READ CODES.....	10
ERASE CODES	12
LIVE DATA	13
VIEW FREEZE FRAME DATA.....	21
RETRIEVE I/M READINESS STATUS	22
O2 MONITOR TEST	24
ON-BOARD MONITOR TEST	26
COMPONENT TEST	28
VIEW VEHICLE INFORMATION.....	29
MODULES PRESENT	31
4 ABS.....	32
READ CODES.....	32
ERASE CODES	33
5 SRS	35

READ CODES.....	35
ERASE CODES.....	35
6 DTC LOOKUP.....	37
7 PLAYBACK DATA	39
REVIEW DATA.....	39
DELETE DATA.....	40
PRINT DATA	40
8 SYSTEM SETUP	42
LANGUAGE	42
UNIT OF MEASURE	43
KEY BEEP SET.....	44
ABOUT	44
TOOL SELF-TEST.....	45
UPDATE MODE	46
VEHICLE INFO SHOW SET	49
9 COMPLIANCE INFORMATION	50
10 WARRANTY AND SERVICE	52
LIMITED ONE YEAR WARRANTY	52
SERVICE PROCEDURES	52

1 Using This Manual

This manual contains device usage instructions.

Some illustrations shown in this manual may contain modules and optional equipment that are not included in your system. Contact your sales representative for availability of other modules and optional tools or accessories.

Conventions

The following conventions are used.

Bold Text

Bold text is used to highlight selectable items such as buttons and menu options.

Example:

- Tap **OK**.

Notes and Important Messages

Notes

A **NOTE** provides helpful information such as additional explanations, tips, and comments.

Example:

NOTE

New batteries reach full capacity after approximately 3 to 5 charging and discharging cycles.

Important

IMPORTANT indicates a situation which, if not avoided, may result in damage to the test equipment or vehicle.

Example:

! **IMPORTANT**

Keep the cable away from heat, oil, sharp edges and moving parts. Replace damaged cables immediately.

Hyperlink

Hyperlinks, or links, that take you to other related articles, procedures, and illustrations are available in electronic documents. Blue italic text indicates a selectable hyperlink and blue underlined text indicates a website link or an email address link.

Illustrations

Illustrations used in this manual are samples, the actual testing screen may vary by test vehicle. Observe the menu titles and on-screen instructions to make correct option selection.

2 Using the Scan Tool

Tool Description

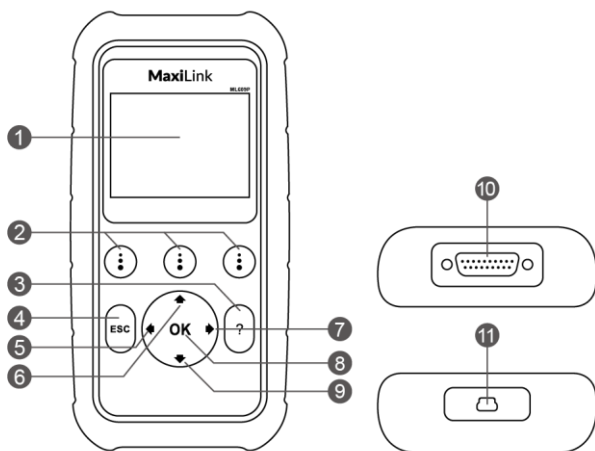


Figure 2-1 Scan Tool View

- 1) **LCD DISPLAY** –displays menus and test results.
- 2) **FUNCTION BUTTONS** – corresponds with “buttons” on screen for executing commands.
- 3) **HELP BUTTON** – displays help information and accesses Code Breaker function.
- 4) **ESC BUTTON** – cancels a selection (or an action) from a menu or returns to the previous screen.
- 5) **LEFT SCROLL BUTTON** – when looking up DTC definitions, press to review previous character and to display additional information on previous screens if present; press to deselect all marked PID data when viewing or recording customized live data list; press to view previous frames of recorded data when playing back live data.
- 6) **UP SCROLL BUTTON** – press to move up menu and submenu items in menu mode. When more than one screen of data is retrieved,

press to scroll to the previous screens.

- 7) **▶ RIGHT SCROLL BUTTON** – When look up DTC definitions, moves to next character and view additional information on next screens if DTC definition covers more than one screen; views next screen or next frames of recorded data. It is also used to view next trouble code when viewing DTCs.
- 8) **OK BUTTON** – confirms a selection (or action) from a menu.
- 9) **▼ DOWN SCROLL BUTTON** – press to move down menu and submenu items in menu mode. When more than one screen of data is retrieved, press to move down to information on next screen.
- 10) **OBD II CONNECTOR** – connects the scan tool to the vehicle's Data Link Connector (DLC).
- 11) **USB CONNECTOR** – connects the scan tool to the PC for printing and upgrading.

Specifications

Table 2-1 Specifications

Item	Description
Display	2.8-inch LCD (320 x 240 dpi)
Connectivity	USB mini 2.0 OBD II DB15
Operating Temp.	-10°C to 60°C (14°F to 140°F)
Storage Temp.	-20°C to 70°C (-4°F to 158°F)
External Power	8.0 to 18.0 V power provided via vehicle battery
Dimensions (LxWxH)	182.8 mm (7.2") x 90.9 mm (3.6") x 33.2 mm (1.3")
Net Weight	237.9 g (0.524 lb.)

Accessories Included

- 1) **OBDII Cable** – use to connect tool to vehicle for communication and to power tool.

- 2) **USB Cable** – used to connect to Mac or Windows PC for printing data saved on tool and to update the tool’s software.
- 1) **User Manual** – instructions on tool operations.
- 2) **Quick Guide** – instructions on tool registration and software update.

Keypad

No solvents such as alcohol are allowed to clean the keypad or display. Use a mild nonabrasive detergent and a soft cotton cloth. Do not soak the keypad as it is not waterproof.

Power

The scan tool is powered via the vehicle Data Link Connector (DLC). Follow the steps below to turn on the scan tool:

- 1) Connect the OBD II Cable to the scan tool.
- 2) Find DLC on the vehicle.
 - *A plastic DLC cover may be found for some vehicles and you need to remove it before attaching the OBDII cable.*
- 3) Plug OBD II cable to the vehicle’s DLC.
- 4) The scan tool will power up and the **Main Screen** will appear.

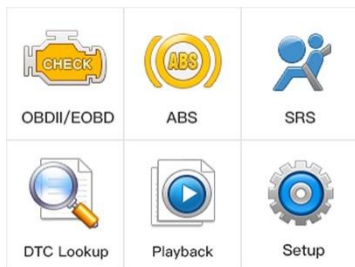


Figure 2-2 Sample Main Screen

Vehicle Coverage

The MaxiLink® ML609P OBDII Scanner is specially designed to work with all OBD II compliant vehicles, including those equipped with the Control Area Network (CAN) protocol. The EPA requires all domestic, Asian and

European vehicles, 1996 and newer (including light trucks), sold in the United States must be OBD II compliant.

A small number of 1994 and 1995 model year gasoline vehicles are OBD II compliant. To verify if a 1994 or 1995 vehicle is OBD II compliant, check the Vehicle Emissions Control Information (VECI) Label which is located under the hood or by the radiator of most vehicles. If the vehicle is OBD II compliant, the label will designate “OBD II Certified”. Additionally, Government regulations mandate that all OBD II compliant vehicles must have a “common” sixteen-pin Data Link Connector (DLC).

For your vehicle to be OBD II compliant it must have a 16-pin DLC (Data Link Connector) under the dash and the Vehicle Emission Control Information Label must state that the vehicle is OBD II compliant.

In addition to OBD II diagnosis, the ML609P scan tool also reads and erases codes for ABS and SRS, dealing with more than 50 US, Asian and European vehicles, including Acura, Audi, Bentley, Benz, BMW, Bugatti, Chrysler, Ford, EU Ford, GM, Honda, Hyundai, Infiniti, Isuzu, Jaguar, Kia, Land Rover, Lexus, Maybach, Mazda, Mini, Mitsubishi, Nissan, Opel, Porsche, Saab, Scion, Seat, Skoda, Smart, Sprinter, Suzuki, Toyota, Vauxhall, Volvo, VW, Renault, Peugeot, Lancia, Fiat, Dacia, Citroen, Alfa, Abarth.

More vehicle supports will come out with new updates released.

Product Troubleshooting

This section describes problems that may be encountered while using the scan tool.

Vehicle Linking Error

A communication error occurs if the scan tool fails to communicate with the vehicle’s ECU (Engine Control Unit). Perform the following steps to resolve error:

- ✓ Verify that the ignition is ON.
- ✓ Ensure that the scan tool’s OBD II connector is securely connected to the vehicle’s DLC.
- ✓ Verify that the vehicle is OBDII compliant.
- ✓ Turn the ignition off and wait for about 10 seconds. Turn the ignition

back to on and continue the testing.

- ✓ Verify the control module is not defective.

Operating Error

If the scan tool freezes, then an exception occurs or the vehicle's ECU (Engine Control Unit) is too slow to respond to requests. You need to do the following to reset the tool:

- ✓ Reset the scan tool.
- ✓ Turn the ignition off and wait for about 10 seconds. Turn the ignition back to on and continue the testing.

Scan tool doesn't power up

If the scan tool won't power up or operates incorrectly, do the following:

- ✓ Check if the scan tool's OBD II connector is securely connected to the vehicle's DLC;
- ✓ Check if the DLC pins are bent or broken. Clean the DLC pins if necessary.
- ✓ Check vehicle battery to make sure it is still good with at least 8.0 volts.

NOTE

Avoid electrostatic interference during operation. If a failure occurs due to electrostatic interference, Please try to operate again.

3 OBD II Diagnostics

When more than one vehicle control module is detected by the scan tool, you will be prompted to select the module with retrievable data. The Power train Control Module [PCM] and Transmission Control Module [TCM] are the most commonly scanned modules.

CAUTION: *Don't connect or disconnect the scan tool while the ignition is on or the engine running.*

- 1) Turn the ignition off.
- 2) Locate the vehicle's 16-pin Data Link Connector (DLC).
- 3) Plug the tool into the vehicle's DLC.
- 4) Turn the ignition on. Engine can be off or running.
- 5) Turn on the scan tool. Use the **UP/DOWN** scroll button to select **OBDII/EOBD** from the **Main Screen**.
- 6) Press the **OK** button to wait for the Menu to display. With the embedded AutoVIN technology in the tool, a sequence of messages displaying the OBDII protocols will be observed on the display until the test vehicle's protocol is detected. The test vehicle information will display as below once it is done. Press **OK** to continue.

Vehicle Info	
Manufacturer:	VW
Year:	1994
VIN:	1V1JC5444R7252367

Figure 3-1 Sample Vehicle Info Screen

- *If the scan tool fails to communicate with the vehicle's ECU (Engine Control Unit) more than three times, a "LINKING ERROR!" message displays on the tool.*
- ✓ Verify the ignition is ON;
- ✓ Check if the scan tool's OBD II cable is securely connected to the vehicle's DLC;

- ✓ Verify that the vehicle is OBD II compliant;
 - ✓ Turn the ignition off and wait for about 10 seconds. Turn the ignition back on and repeat step 5.
 - *If the “LINKING ERROR” message continues to display, contact your local distributor or customer service for assistance.*
- 7) View a summary of system status (MIL status, DTC counts, Monitor status) on screen. Wait a few seconds or press any key to continue.

System Status	
MIL Status	OFF
Codes Foud	0
Monitors N/A	2
Monitors OK	3
Monitors INC	5

Figure 3-2 Sample System Status Screen

- If more than one module is detected, you will be prompted to select a module before testing.
 - Use the **UP/DOWN** scroll button to select a module and press the **OK** button.
- 8) Then you will be prompted to erase previously stored data.
- *Review previously stored data thoroughly before erasing.*

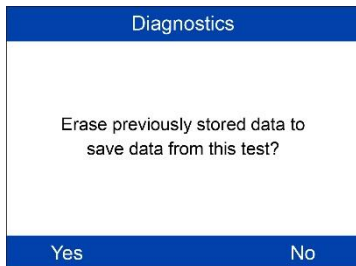


Figure 3-3 Sample Erase Previous Data Screen

- *If no data is stored in the scan tool, the above prompt will not show up.*
- 9) If you wish to erase the data, press the **OK** button; if you do not want to erase the data, press **ESC** to exit or use **LEFT/RIGHT** button to select **NO** and press **OK** for **Diagnostic Menu** to come up.

Read Codes

- ◆ *The Read Codes function can be performed with the key on engine off (KOEO) or with the key on engine running (KOER).*
 - ◆ *Stored Codes are also known as “hard codes”, which are fault codes, or trouble codes that have been stored in the vehicle computer memory because the faults have reoccurred for more than a specified amount of key-cycles. These codes will cause the control module to illuminate the malfunction indicator light (MIL) when emission-related faults occur.*
 - ◆ *Pending Codes are also referred to as “maturing codes” or “continuous monitor codes”. They indicate problems that the control module has detected during the current or last driving cycle but are not as yet considered serious. Pending Codes will not turn on the malfunction indicator light (MIL). If the fault does not occur within a certain number of warm-up cycles, the code clears from memory.*
 - ◆ *Permanent Codes are DTCs that are “confirmed” and are retained in the non-volatile memory of the vehicle’s computer until the appropriate monitor for each DTC has determined that the malfunction is no longer present and is not causing the MIL on. Permanent DTC shall be stored in non-volatile memory and may not be erased by any diagnostics service or by disconnecting power to ECU.*
- 1) Use **UP/DOWN** scroll button to select **Read Codes** from **Diagnostic Menu** and press **OK** button.

Diagnostic Menu	1/11
Read Codes	
Erase Codes	
Live Data	
View Freeze Frame	
I/M Readiness	
O2 Monitor Test	
On-Board Mon. Test	

Figure 3-4 Sample Diagnostic Menu

- 2) Use the **UP/DOWN** scroll button to select **OBDII Codes** or **Enhanced Codes** from the **Read Codes** menu and press the **OK** button.

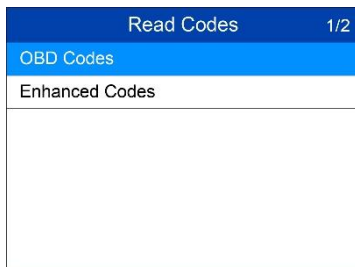


Figure 3-5 Sample Read Codes Screen

- The **OBD Codes** reads pending codes, stored codes, and permanent codes. The **Enhanced Codes** reads DTCs from engine and transmission systems of GM, Chrysler, and Ford vehicles.
- If no codes are found, a message will display "**No (pending) codes are stored in the module!**" Wait a moment or press any key to return to previous screen.

NOTE

Permanent Codes function is available only for vehicles supporting the CAN protocols.

- 3) View DTCs and their definitions on screen.

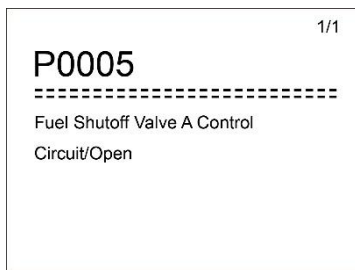


Figure 3-6 Sample DTC Screen

- 4) If more than one DTC is found, use the **LEFT/RIGHT** scroll button to review each code.
 - If retrieved DTCs contain any manufacturer specific or enhanced codes, the AutoVIN technology adopted by this tool will automatically display the definition of the code.

Erase Codes

NOTE

1. Erasing the Diagnostic Trouble Codes may allow the scan tool to delete not only the codes from the vehicle's on-board computer, but also "Freeze Frame" data and manufacturer-specific enhanced data. Further, the I/M Readiness Monitor Status for all vehicle monitors is reset to Not Ready or Not Complete status. Do not erase the codes before repairs or services have been performed.
 2. Even if deleted, codes will again display if the underlining fault causing the code is not addressed.
 3. This function is performed with key on engine off (KOEO). Do not start the engine.
-
- 1) Use the **UP/DOWN** scroll buttons to select **Erase Codes** from **Diagnostics Menu** and press the **OK** button.
 - 2) A warning message displays for your confirmation.

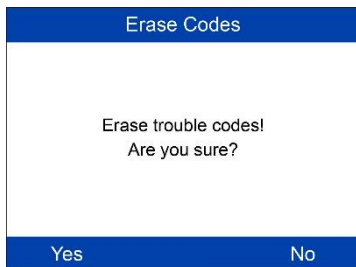


Figure 3-7 Sample Erase Codes Screen

- If you do not want to proceed with erasing codes, press **ESC** button or use **LEFT/RIGHT** scroll button to select **NO** to exit. A message of "**Command Cancelled!**" displays. Wait a few seconds or press any key to return to **Diagnostic Menu**.
- 3) Press the **OK** button to confirm.
 - If the codes are cleared successfully, an "**Erase Done!**" confirmation message displays.
 - If the codes are not cleared, then an "**Erase Failure. Turn Key on with Engine off!**" message displays.
 - 4) Press any button to return to **Diagnostic Menu**.

Live Data

In this function, you can not only read the live data but also record data for later review.

View Data

The View Data function allows viewing of live or real time PID data of vehicle's computer module(s).

- 1) To view live data, use the **UP/DOWN** scroll button to select **Live Data** from **Diagnostic Menu** and press the **OK** button.
- 2) Wait a few seconds while the scan tool validates the PID MAP.

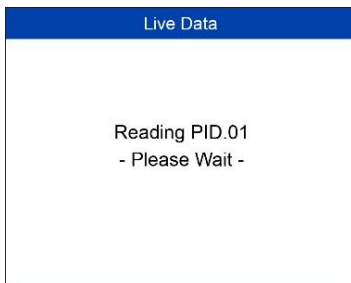


Figure 3-8 Sample Live Data Screen 1

- 3) Use the **UP/DOWN** scroll button to select **View Data** from **Live Data** menu and press the **OK** button.

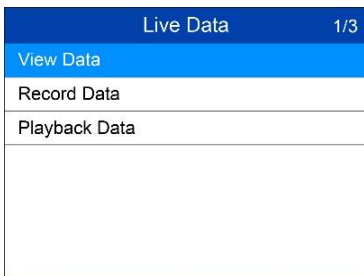


Figure 3-9 Sample Live Data Screen 2

View Complete Data Set

- 1) To view complete set of data, use **UP/DOWN** scroll button to select **Complete Data Set** from **View Data** menu and press the **OK** button.

View Data		1/3
Complete Data Set		
Custom Data Set		
Unit of Measure		

Figure 3-10 Sample View Data Menu

- 2) View live PIDs on the screen. Use the **UP/DOWN** scroll button for more PIDs if additional information is available on more than one page.

View Data		1/147
DTC_CNT		2
FUEL_TYP		--
ALCH_PCT(%)		100
EVAP_VPA(kPa)		327.675
EVAP_VP(Pa)		-1
STSO2FT1(%)		99.2
STSO2FT3(%)		99.2

Figure 3-11 Sample Complete Data Screen

- The number “x” to the right of the screen indicates the sequence of the highlighted item.
- To view full name of the highlighted PID, press the “?” button.
- If the **G** icon displays when a PID is highlighted, graph data is available. Press **OK** to view graph.

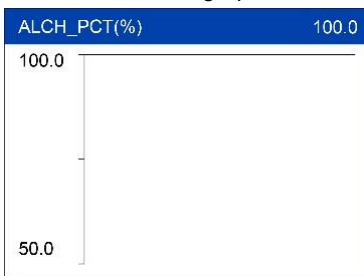


Figure 3-12 Sample Data Graph Screen

- 3) Press the **ESC** button to return to previous menu.

View Custom Data Set

- 1) To view customized PID data, use the **UP/DOWN** scroll button to select **Custom Data Set** from **View Data** menu and press the **OK** button.
- 2) Follow on-screen instructions.

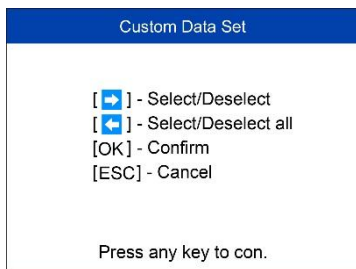


Figure 3-13 Sample Custom Data Set Screen 1

- 3) Use the **RIGHT** button to deselect/select data parameters, and use the **UP/DOWN** scroll button to move up and down. Selected parameters are marked with solid squares.

Custom Data Set		3/147
<input checked="" type="checkbox"/>	DTC_CNT	#01
<input type="checkbox"/>	FUEL_TYP	
<input checked="" type="checkbox"/>	ALCH_PCT	#02
<input type="checkbox"/>	EVAP_VPA	
<input type="checkbox"/>	EVAP_VP	
<input type="checkbox"/>	STSO2FT1	
<input type="checkbox"/>	STSO2FT3	

Figure 3-14 Sample Custom Data Set Screen 2

- The number “x” to the upper right corner of the screen indicates sequence of highlighted item; and “#x” are the order that the parameters are selected and will be displayed.
 - Press the **LEFT** button to deselect all marked items or select all items. A message displays for your confirmation.
 - If you decide to deselect these items, press **OK**; if you decide not to, press **ESC** or use the **LEFT/RIGHT** scroll button to select **NO** to continue PID selections.
- 4) Press the **OK** button to view selected PIDs on screen.

Live Data	1/2
DTC_CNT	2
ALCH_PCT(%)	100.0

Figure 3-15 Sample Custom Data Set Screen 3

- Use the **ESC** button to return to previous menu.

Record Data

The Record Data function allows recording vehicle modules' Parameter Identification (PID) data to help diagnose intermittent vehicle problems. A recording includes 5 frames of live data before trigger event and several frames after trigger event.

There are two trigger modes used to record data:

- Manual Trigger** – press the **OK** button to start recording.
- DTC Trigger** – automatically records PID data when a fault triggers a DTC on the vehicle.

NOTE

DO NOT drive and operate the scan tool at the same time!

To record live data, use the **UP/DOWN** scroll button to select **Record Data** from **Live Data** menu and press the **OK** button.

Record Complete Data Set

- To record complete set of live data, use the **UP/DOWN** scroll button to select **Complete Data Set** from **Record Data** menu and press the **OK** button.

Record Data	1/3
Complete Data Set	
Custom Data Set	
Unit of Measure	

Figure 3-16 Sample Record Data Screen

- 2) Use the **UP/DOWN** scroll button to select a trigger mode and press the **OK** button.

Pick Trigger Mode	1/2
Manual Trigger	
DTC Trigger	

Figure 3-17 Sample Pick Trigger Mode Screen

- If data from previously tested vehicle is not erased, data from current test will be stored in the tool's temporary memory.
- 3) Use the **UP/DOWN** scroll button to select a memory location and press the **OK** button.

Select Memory	1/3
Location #1	*
Location #2	
Location #3	

Figure 3-18 Sample Select Memory Screen 1

- The asterisk (*) icon on the screen indicates that there is a previous recording in the highlighted location.
- If you select a location marked with an asterisk (*) icon, a message prompting to overwrite old recording displays.



Figure 3-19 Sample Select Memory Screen

- If you wish to proceed with overwriting the recording, press the **OK** button; if you do not wish to overwrite it, use the **LEFT/RIGHT** button to select **NO** or press the **ESC** button to pick another memory location.
- 4) Observe on-screen instructions.

- If **Manual Trigger** is selected, following screen displays:

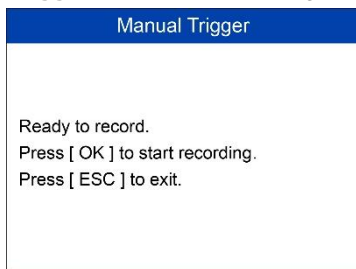


Figure 3-20 Sample Manual Trigger Screen

- If **DTC Trigger** is selected, following screen displays:

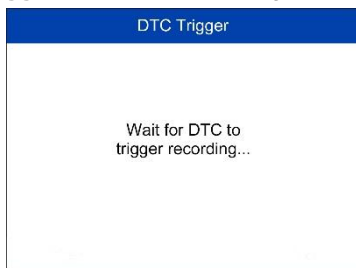


Figure 3-21 Sample DTC Trigger Screen

- 5) Wait for DTC to trigger or press **OK** to start recording.

- ◆ Drive till a DTC is detected when DTC Trigger is selected. If no DTCs are detected, press ESC to exit recording.

Recording... 1/5		1/147
DTC_CNT		2
FUEL_TYP		--
ALCH_PCT(%)		100
EVAP_VPA(kPa)		327.675
EVAP_VP(Pa)		-1
STSO2FT1(%)		99.2
STSO2FT3(%)		99.2

Figure 3-22 Sample Recording Data Screen

- The number “x/x...” in the upper right corner of the screen indicates the number of recorded frames out of the maximum frames that can be recorded.
- 6) The scan tool keeps recording PID data until the **ESC** button is pressed, selected memory location is full, or it completes recording. A message will display asking if the recording should be played back.



Figure 3-23 Sample Recording Done Screen

- If you wish to playback recorded data, press the **OK** button; if you do not wish to playback, press the **ESC** button, or use **LEFT/RIGHT** button to select **NO** and press the **OK** button to return to **Record Data** menu.

Record Custom Data Set

- 1) To record customized data, use the **UP/DOWN** scroll button to select **Custom Data Set** from **Record Data** menu and press the **OK** button.
- 2) Observe on-screen instructions. Press the **OK** button to continue; press the **ESC** button, or use **LEFT/RIGHT** button to select **NO** and press the **OK** button to return to **Record Data** menu.

- 3) Use the **RIGHT** button select/deselect data parameters. Selected parameters are marked with solid squares. Press the **OK** button to confirm.
 - If you wish to deselect all marked items, press **LEFT** button.
 - A message displays to ask for your confirmation.
 - If you decide to deselect these items, press **OK**; if you decide not to, press the **ESC** button, or use the **UP/DOWN** button to select **NO** and press **OK** to continue PID selections.
- 4) Use the **UP/DOWN** scroll button to select a trigger mode and press the **OK** button.
 - If data from previously tested vehicle is not erased, data from current test will be stored in temporary cache.
- 5) Use the **UP/DOWN** scroll button to select a memory location and press the **OK** button.
- 6) Follow on-screen instructions to select DTC trigger mode.
- 7) Wait for DTC to trigger recording or press OK to start recording.
- 8) The scan tool continues recording PID data until user presses ESC button, the selected memory location is full, or it completes recording. A message prompting to playback data shows on the screen.
 - If you wish to playback recorded data, press the **OK** button; if you do not wish to playback, press the **ESC** button, or use the **LEFT/RIGHT** button to select **NO** and press the **OK** button to return to **Record Data** menu.

Playback Data

The Playback Data function allows viewing of previously stored PID data.

- 1) To playback recorded data, use the **UP/DOWN** scroll button to select **Playback Data** from **Live Data** menu and press the **OK** button.
 - You are also allowed to playback recorded data immediately after recording.
- 2) Use the **UP/DOWN** button to select the memory location marked with an asterisk (*) icon.

Select Memory	1/3
Location #1	*
Location #2	
Location #3	

Figure 3-24 Sample Select Memory Screen 2

- If there is no recording in selected location, a message “**Not Supported or Stored No Data**” displays on the screen.
- 3) Use the **UP/DOWN** button to view recorded PIDs of each frame.

1 of 1 frame	3/147
DTC_CNT	2
FUEL_TYP	--
ALCH_PCT(%)	100
EVAP_VPA(kPa)	327.675
EVAP_VP(Pa)	-1
STSO2FT1(%)	99.2
STSO2FT3(%)	99.2

Figure 3-25 Sample Playback Data Screen

- 4) Use the **LEFT/RIGHT** button to view PIDs of next or previous frames.

View Freeze Frame Data

Freeze Frame Data allows the technician to view the vehicle’s operating parameters at the moment a DTC (Diagnostic Trouble Code) is detected. For example, the parameters may include engine speed (RPM), engine coolant temperature (ECT), or vehicle speed sensor (VSS) etc. This information will aid the technician by allowing the parameters to be duplicated for diagnostic and repair purposes.

- 1) To view freeze frame data, use the **UP/DOWN** scroll button to select **View Freeze Frame** from **Diagnostic Menu** and press the **OK** button.
- 2) Wait while the scan tool validates the PID MAP.
- 3) If retrieved information displays on more than one screen, use the **DOWN** scroll button, as necessary, until all the data have been shown up.

View Freeze Frame		1/76
DTC_CNT		127
DTCFRZF		U3FFF
FUELSYS1		OL
FUELSYS2		OL
LOAD_PCT(%)		100.0
ECT(°C)		-39
SHRTFT1(%)		-99.2

Figure 3-26 Sample View Freeze Frame Screen

- If no freeze frame data is available, the message “**No freeze frame data stored!**” displays.
- 4) To view full name of a PID, use the **UP/DOWN** scroll button to select the PID, and press the HELP button.
 - 5) Press **ESC** button to return to previous screen.

Retrieve I/M Readiness Status

I/M Readiness function is used to check the operations of the Emission System on OBD II compliant vehicles. It is an excellent function to use prior to having a vehicle inspected for compliance to a state emissions program.

NOTE

By clearing trouble codes you also clear the readiness status for the individual emission system readiness tests. In order to reset these monitors, the vehicle must be driven through a complete drive cycle with no trouble codes in memory. Times for reset vary depending on vehicle.

Some latest vehicle models may support two types of **I/M Readiness** tests:

- A. **Since DTCs Cleared** – indicates status of the monitors since the DTCs are erased.
- B. **This Drive Cycle** – indicates status of monitors since the beginning of the current drive cycle.

An I/M Readiness Status result of “NO” does not necessarily indicate that the vehicle being tested will fail the state I/M inspection. For some states, one or more such monitors may be allowed to be “Not Ready” to pass the emissions inspection.

There are two ways to retrieve I/M readiness status.

Retrieve I/M Readiness status in typical way

- 1) Use the **UP/DOWN** scroll button to select **I/M Readiness** from **Diagnostic Menu** and press **OK** button.
- 2) Wait while the scan tool validates the PID MAP.
- 3) If the vehicle supports both types of tests, then both types will be displayed on the screen for selection.



Figure 3-27 Sample I/M Readiness Selection Screen

- 4) Use the **UP/DOWN** scroll button to view the status of the MIL light (**ON** or **OFF**) and the following monitors.

For spark ignition engines:

- **MIS** – Misfire Monitor
- **FUEL** – Fuel System Monitor
- **CCM** – Comprehensive Component Monitor
- **EGR** – EGR System Monitor
- **O2S** – O2 Sensors Monitor
- **CAT** – Catalyst Monitor
- **EVAP** – Evaporative System Monitor
- **HTR** – O2 Sensor Heater Monitor
- **AIR** – Secondary Air Monitor
- **HCAT** – Heated Catalyst Monitor

For compression ignition engines:

- **MIS** – Misfire Monitor
- **FUEL** – Fuel System Monitor
- **CCM** – Comprehensive Component Monitor
- **EGR** – EGR System Monitor

- **HCCAT** – NMHC Catalyst Monitor
- **NCAT** – NOx Aftertreatment Monitor
- **BP** – Boost Pressure System Monitor
- **EGS** – Exhaust Gas Sensor Monitor
- **PM** – PM Filter Monitor

Since DTCs Cleared	1/11
MIL	OFF
MIS	OK
FUEL	OK
CCM	OK
CAT	INC
HCAT	N/A
EVAP	INC

Figure 3-28 Sample since DTC Cleared Screen

- 5) If the vehicle supports readiness test of “**This Drive Cycle**”, a screen of the following displays.

This Drive Cycle	1/11
MIL	OFF
MIS	OK
FUEL	OK
CCM	OK
CAT	INC
HCAT	N/A
EVAP	INC

Figure 3-29 Sample This Drive Cycle Screen

- 6) Use the **UP/DOWN** scroll button for more PIDs if additional information is available on more than one page. Or use the **LEFT/RIGHT** scroll button to view PIDs in the previous/next page.
- 7) Press the **ESC** button to return to Diagnostic Menu.

O2 Monitor Test

OBD II regulations set by the (Society of Automotive Engineers) SAE require vehicles monitors and tests on the oxygen (O₂) sensors to identify problems related to fuel efficiency and vehicle emissions. These tests are done automatically when engine operating conditions are within specified limits. These test results are saved in the vehicle’s on-board computer’s memory.

The O2 Monitor Test function allows retrieval and viewing of O2 sensor monitor test results for the most recently performed tests from the vehicle's on-board computer.

The O2 Monitor Test function is not supported by vehicles that communicate using a controller area network (CAN). For O2 Monitor Test results of CAN-equipped vehicles, see *On-Board Monitor Test* on page 26.

- 1) Use the **UP/DOWN** scroll button to select **O2 Monitor Test** from **Diagnostic Menu** and press **OK** button.
- 2) Wait while the scan tool validates the PID MAP.
- 3) Use the **UP/DOWN** scroll button to select O2 sensor from **O2 Monitor Test** menu and press **OK** button.

O2 Monitor Test	1/2
O2 Bank 1 Sensor 1	
O2 Bank 1 Sensor 2	

Figure 3-30 Sample O2 Monitor Test Screen 1

- If the vehicle does not support the mode, a message will be displayed on the screen.
- 4) View test results of selected O2 sensor.

O2 Monitor Test	1/9
Rich-Lean Threshold(V)	
Lean-Rich Threshold(V)	
Low for Switch(V)	
High for Switch(V)	
Rich-Lean Threshold(s)	
Lean-Rich Threshold(s)	
\$70(counts)	

Figure 3-31 Sample O2 Monitor Test Screen 2

- 5) Use the **UP/DOWN** scroll button to view additional data if available.
- 6) Press the **ESC** button to return to the previous menu.

On-Board Monitor Test

The On-Board Monitor Test is useful after servicing or after erasing a vehicle's control module memory. The On-Board Monitor Test for non-CAN-equipped vehicles retrieves and displays test results for emission-related power train components and systems that are not continuously monitored. The On-Board Monitor Test for CAN-equipped vehicles retrieves and displays test results for emission-related power train components and systems that are and are not continuously monitored.

The scan tool allows access to the results of on-board diagnostic monitoring tests for specific components/systems. The vehicle manufacturer is responsible for assigning "Manufacturer Defined Test IDs" and Component IDs for tests of different systems and components. The advanced feature of this scan tool enables you to read the definition of an On-Board Diagnostic Monitor ID.

NOTE

The scan tool will display a test definition if this test definition is present in the vehicle's computer memory. If no such definition is present, the scan tool will only display the Test IDs.

In this test, there are typically a minimum value, a maximum value, and a current value for each monitor. By comparing the current value with the minimum and maximum value, the scan tool determines if the components and monitors are OK.

- 1) Use the **UP/DOWN** scroll button to select **On-Board Mon. Test** from **Diagnostic Menu** and press the **OK** button.
- 2) Wait while the scan tool validates the PID MAP.
- 3) The scan tool will prompt you to select the vehicle make.
- 4) After you select the vehicle manufacturer, the scan tool displays the On-Board Monitors test results for specific monitored systems.

On-Board Mon. Test	1/4
Enhanced Evaporative Emissio...	
O2 Sensor Heater System Time...	
Exhaust Gas Recirculation Sys...	
Catalyst Efficiency Monitor	

Figure 3-32 Sample On-board Mon. Test Screen 1

- 5) From **On-Board Mon. Test** menu, use the **UP/DOWN** scroll button to select a test to view and press the **OK** button. Or, use the **LEFT/RIGHT** scroll button to view previous/next screen of test items.
 - If the vehicle being tested does not support the mode, an advisory message will display on the screen.
 - For CAN-equipped vehicles, test selections may be depicted as below:

Enhanced Eaporative Emission	1/12
EVAP canister loading test	
EVAP excess vacuum test 1	
EVAP excess vacuum fail test 2	
EVAP excess vacuum pass tes...	
EVAP weak vacuum pass test 1	
EVAP weak vacuum fail test 1	
EVAP weak vacuum test 2 vac...	

Figure 3-33 Sample On-board Mon. Test Screen 2

- 6) Use the **UP/DOWN** scroll button to select the desired monitor from On-Board Mon. Test menu and press the **OK** button.
- 7) View test data on screen.

EVAP canister loading test	1/6
ID	04
Module	\$10
Test Value	0000
Min Limit	0000
Max Limit	----
Status	OK

Figure 3-34 Sample On-board Mon. Test Screen 3

NOTE

If the On-Board Monitor Test fails, this monitor item will be listed in red.

EVAP canister loading test	1/6
ID	04
Module	\$10
Test Value	0000
Min Limit	0000
Max Limit	----
Status	Fail

Figure 3-35 Sample On-board Mon. Test Screen 4

- 8) Press **ESC** button to return to the previous menu.

Component Test

The Component Test initiates a leak test for the vehicle's EVAP system. The scan tool itself does not perform the leak test, but commands the vehicle's on-board computer to start the test. Different vehicle manufacturers might use different criteria and methods for stopping the test once it has been started. Before starting the Component Test, refer to the vehicle service manual for instructions to stop the test.

- 1) Use the **UP/DOWN** scroll button to select **Component Test** from **Diagnostic Menu** and press the **OK** button.
- 2) Wait for the scan tool to display the **Component Test** menu.



Figure 3-36 Sample Component Test Screen 1

- 3) If the test has been initiated by the vehicle, a confirmation message will be displayed on the screen.



Figure 3-37 Sample Component Test Screen 2

- Some vehicles do not allow scan tools to control vehicle systems or components. If the vehicle under test does not support the EVAP Leak Test, the message, “The select mode is not supported” will display.

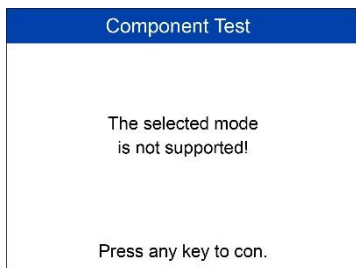


Figure 3-38 Sample Component Test Screen 3

- 4) Wait a few seconds or press any key to return to previous screen.

View Vehicle Information

The Vehicle Info. function enables retrieval of Vehicle Identification No. (VIN), Calibration ID Nos. (CINs), Calibration Verification Nos. (CVNs) and In-use Performance Tracking on 2000 and newer vehicles that support Mode 9.

- 1) Use **UP/DOWN** scroll button to select **Vehicle Info.** from the **Diagnostic Menu** and press **OK** button.
- 2) A message displays to remind you to “Turn key with engine off!” Wait a moment or press any key to continue.



Figure 3-39 Sample Vehicle Info. Screen 1

- 3) Wait while the scan tool reads vehicle information.
 - If the vehicle does not support this mode, a message displays that the mode is not supported.
- 4) From **Vehicle Info.** Menu, use the **UP/DOWN** scroll button to select an available item to view and press the **OK** button.

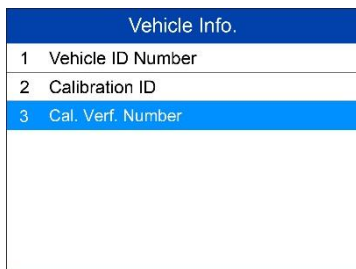


Figure 3-40 Sample Vehicle Info. Screen 2

- 1) View retrieved vehicle information on screen.

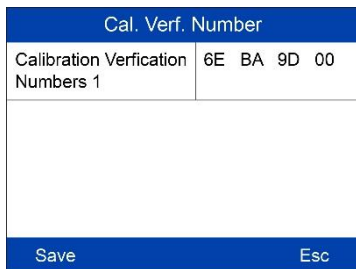


Figure 3-41 Sample Vehicle Info. Screen 3

- 2) Press the **ESC** button to return to previous menu.

Modules Present

The Modules Present function displays the module IDs and communication protocols for OBDII modules in the vehicle.

- 1) Use the **UP/DOWN** scroll button to select **Modules Present** from **Diagnostic Menu** and press **OK** button.
- 2) View modules present with their IDs and communication protocols.

Modules Present	
ID	Protocol
\$10	ISO 9141-2

Figure 3-42 Sample Modules Present Screen

- 3) Press the **ESC** button to return to previous menu.

4 ABS

An anti-lock braking system (ABS) is an automobile safety system that allows the wheels on a motor vehicle to maintain tractive contact with the road surface according to driver inputs while braking, preventing the wheels from locking up (ceasing rotation) and avoiding uncontrolled skidding. It is an automated system that uses the principles of threshold braking and cadence braking which were practiced by skillful drivers with previous generation braking systems. It does this at a much faster rate and with better control than many drivers could manage.

An ABS warning lamp that is on usually means trouble and you need to pull the code to figure out what is wrong. The ML609P provides convenient service to read and erase codes for the ABS.

Read Codes

1. From **Main Screen** (*Figure 2-2*), use the **UP/DOWN** scroll button and **LEFT/RIGHT** scroll button to select **ABS** and press the **OK** button.
2. Select **Read codes** from the diagnostic function list.

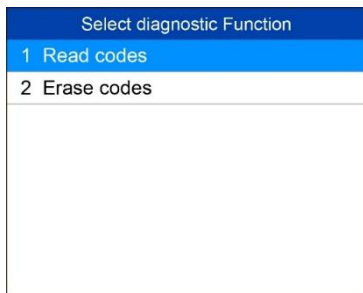


Figure 4-1 Sample Diagnostic Function Screen

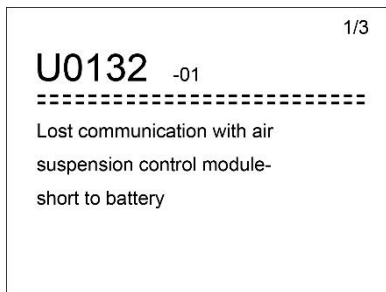


Figure 4-2 Sample Trouble Codes Screen

3. All the DTCs of the ABS control module are displayed. The data will be automatically saved for later review.

Erase Codes

1. Select Erase codes from the diagnostic function list (*Figure 4-1*).
2. Follow the on-screen instruction and make sure the ignition on and engine off. Press **Yes** to continue.

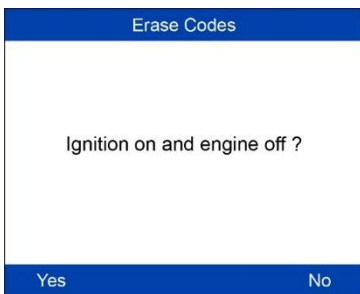


Figure 4-3 Sample Erase Codes Screen

3. A confirmation message "DTCs and freeze data will be deleted. Are you sure you want to continue?" will pop up to ask for your confirmation. Press **Yes** to continue.
4. Erase Codes command will be sent and you can perform Read Codes function to verify. Press any key to continue.

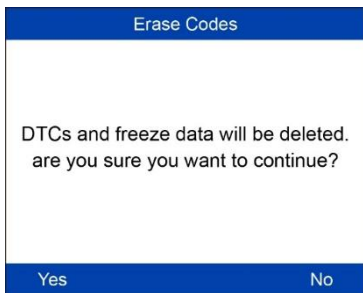


Figure 4-4 Sample Erase Codes Screen

NOTE

For some test vehicles, the Erase Codes function is automatically performed after Read Codes function, follow the on-screen instructions to complete the service.

5 SRS

The purpose of the SRS light on your instrument panel is to alert you of a potential problem with your supplemental restraint system.

Use the ML609P to have the system checked if:

- The light does not come on when you turn the ignition ON.
- The light stays on after the engine starts.
- The light comes on or flashes while you are driving.

Read Codes

1. From **Main Screen** (*Figure 2-2*), use the **UP/DOWN** scroll button and **LEFT/RIGHT** scroll button to select **SRS** and press the **OK** button.
2. Select **Read codes** from the diagnostic function list (*Figure 4-1*).
3. All the DTCs of the ABS control module are displayed. The data will be automatically saved for later review.



Figure 5-1 Sample Trouble Codes Screen

Erase Codes

1. Select **Erase codes** from the diagnostic function list (*Figure 4-1*).
2. Follow the on-screen instruction and make sure the ignition on and engine off. Press **Yes** to continue.
3. A confirmation message "DTCs and freeze data will be deleted. Are you sure you want to continue?" will pop up to ask for your confirmation.

Press **Yes** to continue.

4. Erase Codes command will be sent and you can perform Read Codes function to verify. Press any key to continue.

6 DTC Lookup

The DTC Lookup function allows user to search definitions of DTC stored in built-in DTC library.

- 1) From **Main Screen** (Figure 2-2), use the **UP/DOWN** scroll button and **LEFT/RIGHT** scroll button to select **DTC Lookup** and press the **OK** button.
- 2) From **DTC Lookup** screen, use the **LEFT/RIGHT** button to move to the desired character, use the **UP/DOWN** button to change selected digit/character and press the **OK** button to confirm.

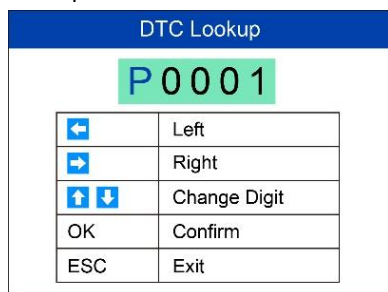


Figure 6-1 Sample DTC Lookup Screen

- 3) View the data trouble code (DTC) definition on screen. When DTC definition is on more than one screen, use the **LEFT/RIGHT** button or **UP/DOWN** button to view additional information on previous/next screens.
 - If retrieved DTCs contain any manufacturer specific codes, the AutoVIN function embedded in this tool will automatically display the definition of the code.
 - If definition could not be found, the scan tool displays "**Please refer to vehicle service manual!**"
 - For **DTC Guide** information, press the "?" **Help** button.
- 4) To view previous or next DTC in the built-in DTC library, use the **LEFT/RIGHT** button.
- 5) To enter another DTC, press the **ESC** button to return to previous screen.

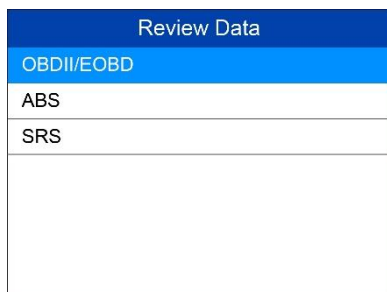
- 6) To exit to **Main Screen**, press the **ESC** button.

7 Playback Data

The Playback function allows viewing and printing of data from last recorded test.

Review Data

- 1) Use the **LEFT/RIGHT** scroll button to select **Playback** from **Main Screen** (Figure 2-2), and press the **OK** button. Wait for the **Review Data** screen to appear.



Review Data
OBDII/EOBD
ABS
SRS

Figure 7-1 Sample Review Data Screen 1

- 2) To review data saved in the OBDII/EOBD function, select **OBDII/EOBD** in the **Replay** menu. To review data saved in the **ABS/SRS** function, select **ABS/SRS** in the **Replay** menu. Then press **OK** button to continue.
- 3) Use the **UP/DOWN** scroll button to select the desired DTC entries from **OBD II/EOBD** or **ABS** or **SRS** menu, and press the **OK** button to view details of the trouble codes saved during the vehicle examine.

NOTE

There are four major types of trouble codes, they are Trouble Code, Data Stream, Freeze Frame, and ECU Information. The tool will only display the trouble codes save.

OBD II /EOBD		1/4
1	Trouble Code	
2	Data Stream	
3	Freeze Frame	
4	ECU Information	
Delete		Delete All

Figure 7-2 Sample Review Data Screen 2

- If no data from previously tested vehicle is recorded, a message **"No data available!"** shows on the screen.
- Review selected data on screen.

1 of 1 frame		1
DTC_CNT		2
FUEL_TYP		--
ALCH_PCT(%)		100.0
EVAP_VPA(kPa)		327.675
EVAP_VP(Pa)		-1
STSO2FT1(%)		99.2
Pre. Frame		Print
		Next Frame

Figure 7-3 Sample Reviewing Data Screen 3

Delete Data

By selecting **Delete** on the review screen (*Figure 7-1*), you are allowed to erase the selected data on the scan tool. Review the recordings thoroughly before erasing. You could also erase all recordings by select **Delete All**.

NOTE

Don't use **Delete All** unless you are definitely sure what you are going to proceed.

Print Data

The **Print Data** function allows printing DTC data recorded by the tool by connecting the tool to a Windows-based PC with the supplied USB cable.

NOTE

The print function is not available on Mac for the present.

- 1) Download the **Maxi PC Suite** from www.autel.com and install.
- 2) Connect the tool to computer using the supplied USB cable.
- 3) Run **Autel Printer** software on the computer.
- 4) Select **Playback** function on the Main Screen of the scan tool. In **Scan/OBDII** screen, use the **UP/DOWN** scroll button to select the data you want to print. Wait for the review window to display, and then select **Print** function. The selected file will upload to your computer. For more detailed instructions, please refer to **4. Playback Data**.
- 5) The **Printer** will display as below.

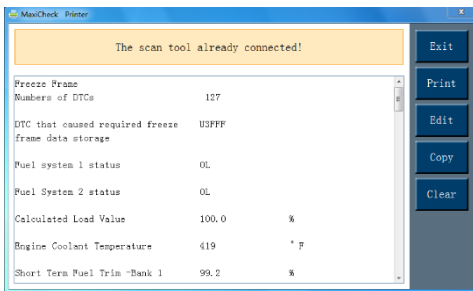


Figure 7-4 Sample Printer Screen

- 6) The selected data will display on the textbox of **Printer**. By selecting the function keys on the right, you could execute the following operations:
 - Print – print all data in the textbox to a printer connected to your computer.
 - Edit – display an editable NOTEPAD window with recorded data.
 - Copy – copy data in the textbox to the clipboard.
 - Clear – delete all data in the textbox.
 - Exit – quit the operation.

NOTE

The scan tool can only print text data even though the data is saved in graphic mode.

8 System Setup

The System Setup functions allow you to adjust default settings and view information about the scan tool.

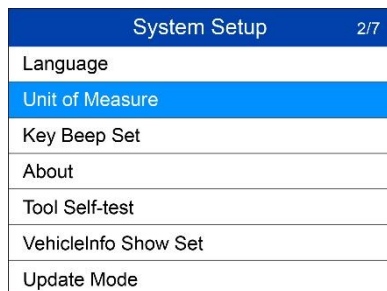
- 1) **Language:** Selects the desired language.
- 2) **Unit of Measure:** Sets the unit of measure to English or Metric.
- 3) **Key Beep Set:** Turns on/off beep.
- 4) **About:** Provides information of the scan tool.
- 5) **Tool Self-test:** Checks if the LCD display and keyboard are working normally.
- 6) **Update Mode:** Accesses the Update Mode.
- 7) **Vehicle Info Show Set:** Turns on/off the Vehicle Info display.

NOTE

Tool operates with default settings until changed.

To enter the Setup menu

From the **Main Screen:** Use the **UP/DOWN** scroll button and **LEFT/RIGHT** scroll button to select **Setup**, and press the **OK** button. Follow the instructions to make adjustments and settings as described in the above setup options.

A screenshot of a handheld device's 'System Setup' menu. The title 'System Setup' is at the top right, with '2/7' next to it. The menu items are listed vertically: Language, Unit of Measure (highlighted in blue), Key Beep Set, About, Tool Self-test, VehicleInfo Show Set, and Update Mode.

System Setup	2/7
Language	
Unit of Measure	
Key Beep Set	
About	
Tool Self-test	
VehicleInfo Show Set	
Update Mode	

Figure 8-1 Sample System Setup Screen

Language

- *English is the default language.*

- 1) From **System Setup** screen, use the **UP/DOWN** scroll button to select **Language**, and press the **OK** button.
- 2) Use the **UP/DOWN** scroll button to select the desired language and press the **OK** button to save your selection and return to previous screen.



Figure 8-2 Sample Language Screen

Unit of Measure

- *Metric is the default measurement unit.*
- 1) From **System Setup** screen, use the **UP/DOWN** scroll button to select **Unit of Measure** and press the **OK** button.
 - 2) From **Unit of Measure** screen, use the **UP/DOWN** scroll button to select the desired unit of measurement.

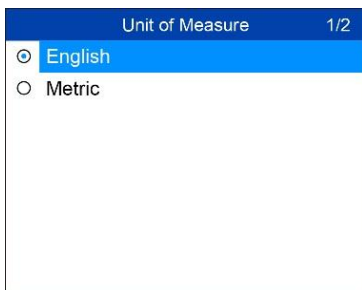


Figure 8-3 Sample Unit of Measure Screen

- 3) Press the **OK** button to save your selection and return to previous menu.

Key Beep Set

This function allows you to turn on/off the built-in speaker as an indicator during diagnostic testing.

- *The default setting is Beep On.*
- 1) From **System Setup** screen, use the **UP/DOWN** scroll button to select **Key Beep Set** and press the **OK** button.
 - 2) From **Key Beep Set** menu, use the **UP/DOWN** scroll button to select **Beep ON** or **Beep OFF** to turn on/off the beep.



Figure 8-4 Sample Key Beep Set Screen

- 3) Press the **OK** button to save your selection and return to previous menu.

About

The **About** function displays important tool information including serial number and software version number.

- 1) From **Main Screen**, use the **UP/DOWN** scroll button and **LEFT/RIGHT** scroll button to select **About** and press the **OK** button; wait for the **About** screen to display.
- 2) View tool information on screen.



Figure 8-5 Sample About Screen

Tool Self-test

The Tool Self-test function checks if the display and keyboard are working properly.

Display test

The **Display Test** function checks if the LCD display is working normally.

- 1) From **System Setup** screen, use the **UP/DOWN** scroll button to select **Tool Self-test**, and press the **OK** button.
- 2) Select **Display Test** from **Tool Self-test** menu and press the **OK** button to start test.

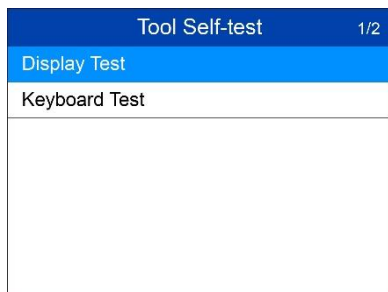


Figure 8-6 Sample Tool Self-test Screen

- 3) When completed, press the **ESC** button to exit.

Keyboard Test

The **Keyboard Test** function verifies if the keys are functioning properly.

- 1) Use the **UP/DOWN** scroll button to select **Keyboard Test** from the **Tool Self-test** menu (Figure 8-6), and then press the **OK** button.
- 2) Press any key to start test. When you press a key, the key name should display on screen. If the key name does not display, the key is not functioning.



Figure 8-7 Sample Keyboard Test Screen

- 3) Double press **ESC** to return to previous menu.

Update Mode

This function enables the tool software to be updated through a Mac-based or Windows-based computer.

- *To update your scan tool, you need the following items.*
 - MaxiLink® ML609P
 - A Mac-based or Windows-based computer or laptop with USB ports
 - The provided USB cable

Register the Tool

The tool must be registered prior to updating it. Register the tool on our website: www.autel.com. Visit the site to download software update programs, research tools and retrieve warranty information.

NOTE

Prior to registration, please confirm your network is working properly.

1. Visit the website <http://pro.autel.com>.
2. If you already have an Autel account, Sign In with your account ID and password.

3. If you are a new member to Autel, click on the **Create Autel ID** button on the left side of the screen to create an ID.
4. Enter the required information in the input fields, and click the **Get Verification Code** button to get a verification code for email validation.
5. The online system will automatically send a verification code to the registered email address. Input the code in the Verification code field and complete other required fields. Read through Autel's Terms and Conditions and click on Agree, and then click **Create Autel ID** at the bottom. A product registration screen will display.
6. The device's serial number and password is located in the [About](#) section of the Settings application on the tool.
7. Select your product model, enter the product serial number and password on the Product Registration screen, and click **Submit** to complete the registration procedure.

Update Procedure

Autel frequently releases software updates to download.

Connect the device with a Mac-based or Windows-based computer using the included USB cable. The Windows version is taken as an example here.

Follow the update procedure to finish updating.

1. Download the **Maxi PC Suite** from www.autel.com > *Support & Updates* > *Firmware & Downloads* > *Update Client*, and install to your Windows-based computer.
2. Run the **Maxi PC Suite**. Wait for the Log In window to display.

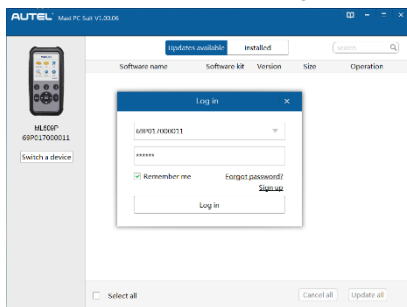


Figure 8-8 Sample Log in Window

3. Connect the scan tool to your computer with the provided USB cable.

- From **System Setup** screen in scan tool, select **Update Mode**, and press the **OK** button.
- Enter your Autel ID and password and wait for the Update window to display. If you forget your password, click the [**Forget Password?**] link to our website and retrieve your password. Or click **Sign up** to create an Autel ID to continue.
- Select tool and serial number, click **OK** to continue.
- In the Update window, select the appropriate files to install.

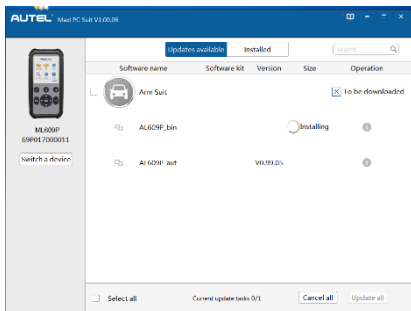


Figure 8-9 Sample Update Window

Generally, there are two ways to update programs:

Batch Update

- Select the programs to update by checking the boxes next to those items. Then click the **Update All** button on the bottom right of screen. Click the **Clear All** button to deselect files.
- Or, click on the **Select All** checkbox on the bottom left of screen and all updatable items will be selected. Click the **Update All** button on the right of the screen.
- When the download is completed, the programs will be automatically installed. The new version will replace the old version.

Single Update

- Locate the desired update and click the **Update** button in the same line.
- The downloaded programs will automatically install. The update will replace the existing version of the software.

Vehicle Info Show Set

This function allows you to turn on/off the Vehicle Info display when entering the test vehicle through OBDII function.

- *The default setting is Show On.*
- 4) From **System Setup** screen, use the **UP/DOWN** scroll button to select **Vehicle Info Show Set** and press the **OK** button.
 - 5) From **Vehicle Info Show Set** menu, use the **UP/DOWN** scroll button to select **Show ON** or **Beep OFF** to turn on/off the Vehicle Info screen.

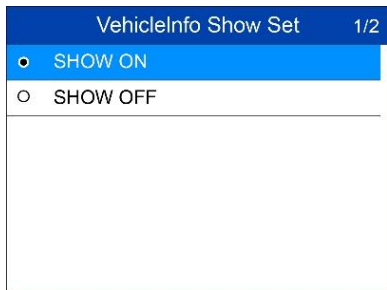


Figure 8-10 Sample Key Beep Set Screen

- 6) Press the **OK** button to save your selection and return to previous menu.

9 Compliance Information

FCC Compliance

This device complies with Part 15 of the FCC rules and Industry Canada's license-exempt RSSs. Operation is subject to the following two conditions:

1. This device may not cause harmful interference.
2. This device must accept any interference received, including interference that may cause undesired operation.

Cet appareil est conforme aux CNR exempts de licence d'Industrie Canada. Son fonctionnement est soumis aux deux conditions suivantes:

1. Ce dispositif ne peut causer des interférences; et
2. Ce dispositif doit accepter toute interférence, y compris les interférences qui peuvent causer un mauvais fonctionnement de l'appareil.

WARNING

Changes or modifications not expressly approved by the party responsible for compliance could void the user's authority to operate the equipment.

NOTE

This equipment has been tested and found to comply with the limits for a Class B digital device, pursuant to Part 15 of the FCC Rules. These limits are designed to provide reasonable protection against harmful interference in a residential installation.

This equipment generates uses and can radiate radio frequency energy and, if not installed and used in accordance with the instructions, may cause harmful interference to radio communications. However, there is no guarantee that interference will not occur in a particular installation. If this equipment does cause harmful interference to radio or television reception, which can be determined by turning the equipment off and on, the user is encouraged to try to correct the interference by one or more of the following measures:

- Reorient or relocate the receiving antenna.
- Increase the separation between the equipment and receiver.

-- Connect the equipment into an outlet on a circuit different from that to which the receiver is connected.

-- Consult the dealer or an experienced radio/TV technician for help.

Changes or modifications not expressly approved by the party responsible for compliance could void the user's authority to operate the equipment.

SAR

The radiated output power of this device is below the FCC radio frequency exposure limits. Nevertheless, the device should be used in such a manner that the potential for human contact is minimized during normal operation.

The exposure standard for wireless devices employs a unit of measurement known as the Specific Absorption Rate, or SAR. The SAR limit set by the FCC is 1.6 W/Kg. Tests for SAR are conducted using standard operating positions accepted by the FCC with the device transmitting at its highest certified power level in all tested frequency bands.

Although the SAR is determined at the highest certified power level, the actual SAR level of the device while operating can be well below the maximum value. This is because the device is designed to operate at multiple power levels so as to use only the power required to reach the network. To avoid the possibility of exceeding the FCC radio frequency exposure limits, human proximity to antenna should be minimized.

RF WARNING STATEMENT

The device has been evaluated to meet general RF exposure requirement. The device can be used in portable exposure condition without restriction.

RoHS COMPLIANCE

This device is declared to be in compliance with the European RoHS Directive 2011/65/EU.

CE COMPLIANCE

This product is declared to conform to the essential requirements of the following Directives and carries the CE mark accordingly:

EMC Directive 2014/30/EU

R&TTE Directive 1999/5/EC

Low Voltage Directive 2014/35/EU

10 Warranty and Service

Limited One Year Warranty

Autel warrants to its customers that this product will be free from all defects in materials and workmanship for a period of one (1) year from the date of the original purchase, subject to the following terms and conditions:

- 1) The sole responsibility of Autel under the Warranty is limited to either the repair or, at the option of Autel, replacement of the scan tool at no charge with Proof of Purchase. The sales receipt may be used for this purpose.
- 2) This warranty does not apply to damages caused by improper use, accident, flood, lightning, or if the product was altered or repaired by anyone other than the Manufacturer's Service Center.
- 3) Autel shall not be liable for any incidental or consequential damages arising from the use, misuse, or mounting of the scan tool. Some states do not allow limitations on how long an implied warranty lasts, so the above limitations may not apply to you.
- 4) All information in this manual is based on the latest information available at the time of publication and no warranty can be made for its accuracy or completeness. Autel reserves the right to make changes at any time without notice.

Service Procedures

If you have any questions, please contact your local store, distributor or visit our website at www.autel.com.

If it becomes necessary to return the scan tool for repair, contact your local distributor for more information.